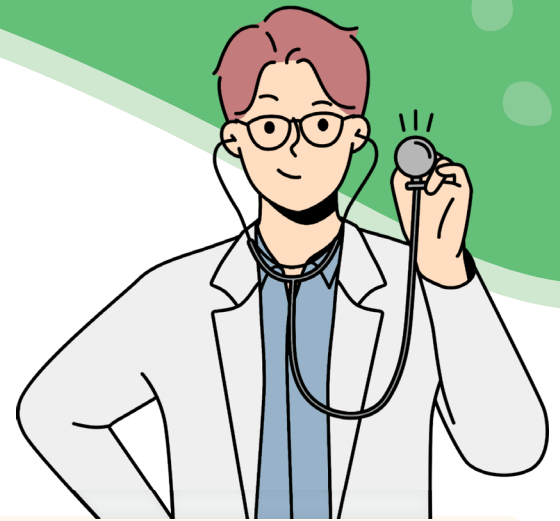




ADULT PSYCHIATRIC ACCESS LINE (APAL)

# HealthHaven

Free statewide support for Virginia primary care providers (PCPs) who see adult patients with behavioral health concerns!



## The Call Line

Same-day mental health consultation for Virginia PCPs concerning an adult patient with behavioral health concerns.

**1-888-371-8627**  
and press 3 to speak with:

- Psychiatrists
- Addiction medicine specialists (18+)
- Clinical pharmacists
- Licensed mental health professionals

You can also request **care navigation**, which connects your patient to accessible behavioral health, substance use, and other vital resources in their area.

Calls are returned **within 30 minutes** during normal business hours, and there is **no cost** to you or your patient for services.



[Learn More About The Call Line](#)

## Continuing Medical Education (CME)

HealthHaven hosts **low-cost CME trainings** focused on topics in adult behavioral health concerns. These trainings are adapted to fit into your busy schedule, so you can continue to support patients in your daily practice while elevating your approach.

Our current core offering is **The REACH Institute: Adult Behavioral Health in Primary Care (ABH)**. REACH ABH empowers Virginia PCPs to gain skills and confidence in assessing, managing, and treating adult behavioral health conditions encountered in daily practice. We offer this course several times each year—scan the QR code below to view upcoming sessions.



[Explore CME Opportunities](#)